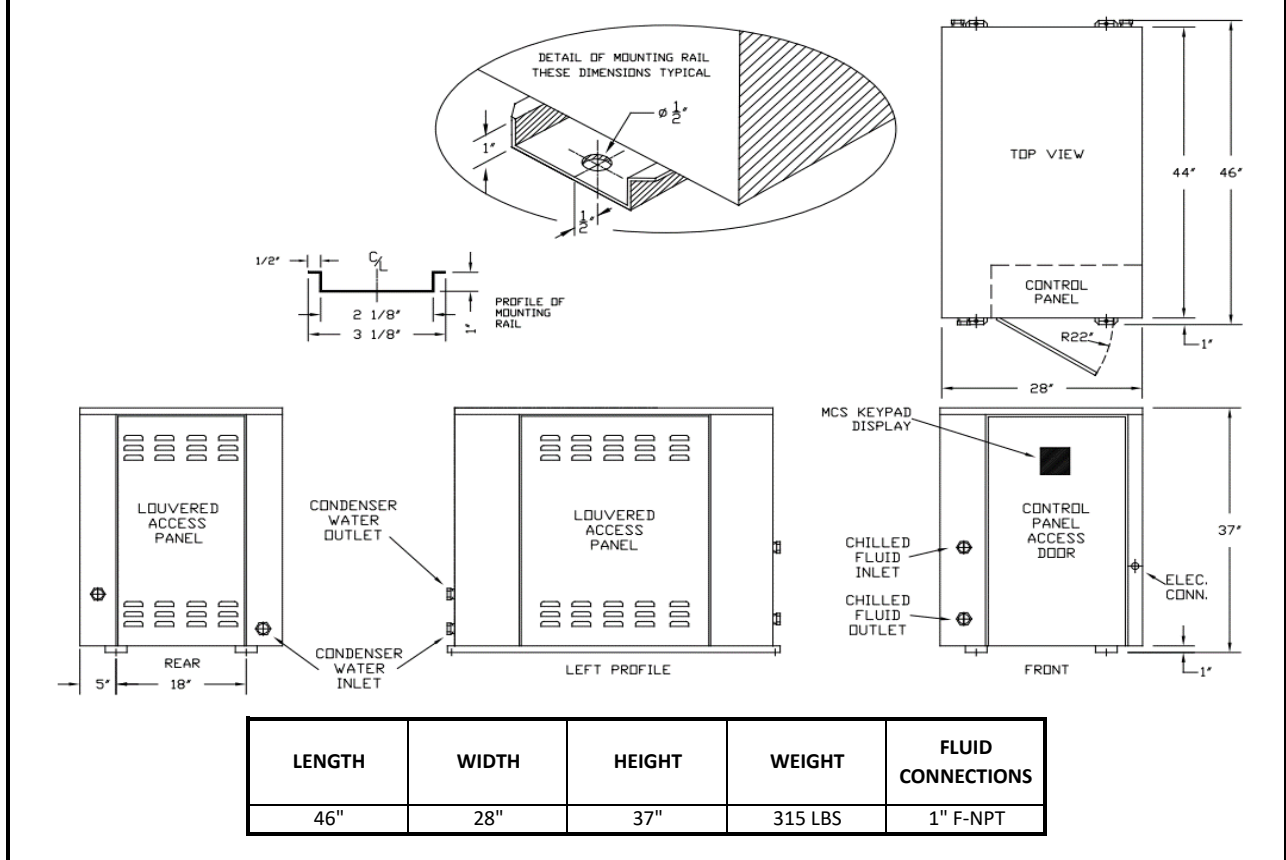




# PWC36S-ZD

## PACKAGED WATER-COOLED 4 HP SINGLE CIRCUIT DIGITAL SCROLL

### DIMENSIONAL DRAWINGS



| PRODUCT PERFORMANCE INFORMATION |                                      |        |           |      |           |      |            |      |            |      |
|---------------------------------|--------------------------------------|--------|-----------|------|-----------|------|------------|------|------------|------|
| REFRIGERANT                     | COMPRESSOR OPER. TEMP. SUCTION RANGE | LFT °F | 70°F COND |      | 90°F COND |      | 105°F COND |      | 120°F COND |      |
|                                 |                                      |        | TONS      | EER  | TONS      | EER  | TONS       | EER  | TONS       | EER  |
| R407C                           | 25°F to 55°F                         | 35     | 3.3       | 21.5 | 3.0       | 14.1 | 2.8        | 10.6 | 2.5        | 7.9  |
|                                 |                                      | 40     | 3.7       | 23.5 | 3.3       | 15.6 | 3.1        | 11.9 | 2.8        | 8.9  |
|                                 |                                      | 50     | 4.5       | 27.4 | 4.1       | 18.9 | 3.8        | 14.6 | 3.5        | 10.9 |
|                                 |                                      | 60     | N/A       | N/A  | 5.0       | 22.5 | 4.7        | 17.6 | 4.3        | 13.3 |
|                                 |                                      | 65     | N/A       | N/A  | 5.5       | 24.2 | 5.1        | 19.1 | 4.7        | 14.6 |
| R404A                           | -10°F to 45°F                        | 0      | 1.6       | 8.9  | 1.5       | 7.5  | 1.2        | 4.6  | 1.1        | 3.3  |
|                                 |                                      | 10     | 2.0       | 11.2 | 1.9       | 9.5  | 1.6        | 5.9  | 1.3        | 4.3  |
|                                 |                                      | 25     | 2.8       | 15.3 | 2.6       | 13.0 | 2.2        | 8.3  | 1.9        | 6.0  |
|                                 |                                      | 40     | 3.8       | 19.9 | 3.5       | 17.1 | 2.9        | 11.0 | 2.5        | 8.1  |
|                                 |                                      | 50     | N/A       | N/A  | 4.3       | 20.1 | 3.5        | 13.2 | 3.0        | 9.7  |
|                                 |                                      | 55     | N/A       | N/A  | 4.7       | 21.7 | 3.9        | 14.3 | 3.3        | 10.5 |

DRAKE REFRIGERATION INC  
 2900 SAMUEL DRIVE  
 BENSALEM, PA 19020  
 (888) 289-7299  
[www.drakechillers.com](http://www.drakechillers.com)

\*ALL INFORMATION FOR REFERENCE ONLY



# PWC36S-ZD

## PACKAGED WATER-COOLED 4 HP SINGLE CIRCUIT DIGITAL SCROLL

### STANDARD FEATURES

| FEATURE                                 | BENEFIT  |
|---|--|
| Listings                                | ETL 3046941, UL STD 1995, CAN/CSA STD, C22.2 No. 236   |
| Micro Control Systems Controller        | Open source, microprocessor built to operate in the HVAC/R industry  |
| Controls                                | BMS, BAS communications, remote access, monitoring services  |
| Stainless Steel Brazed Plate Evaporator | Corrosion resistant, fully insulated and selected upon requirements  |
| Copeland Digital Scroll Compressor      | Industry leader, long lasting compressor with digital technology for precision temperature control and modulation down to 40% capacity |
| Compressor Crankcase Heater             | Prevents compressor damage caused by cold refrigerant on startup   |
| Suction Accumulator                     | Protects the compressor from damage caused by liquid flood back by preventing liquid from entering the compressor                      |
| Water Flow Switch                       | Protects against process fluid freezing caused by pump failure   |
| Coaxial "Tube-in-Tube" Condenser        | Highly effective, compact heat exchanger with superior anti-fouling characteristics  |
| Painted Galvanized Steel Metal Cabinet  | Sturdy, corrosion resistance, professional appearance  |
| Insulated Process Fluid Lines           | Maximum thermal efficiency   |
| Factory Tested                          | Ensures the unit meets the customer's performance designed criteria and arrives in working order                                       |
| Full Refrigerant Charge                 | Hassle free and more efficient installation  |
| NEMA 3R Rated Electrical                | Indoor/outdoor use   |
| Phase Monitors                          | Electrical protection for compressors  |

### AVAILABLE OPTIONS

| OPTIONS               | AVAILABLE   |
|-----------------------|---|
| Extended Warranty     | 4 year extended compressor warranty   |
| Electrical            | Compressor fusing, disconnects, circuit breakers and more                     |
| Stainless Steel Pumps | 1/3 HP to 25 HP on board pumps in multiple configurations & options           |
| Fluid Piping Upgrades | Flow meters, pressure gauges, low flow bypass valves, and more                |
| Head Pressure Control | Condenser Water Regulating valves   |
| Other                 | Casters, service outlets, city water add-ons, heaters, water reg. valves etc. |

*More options and customization available, contact factory for information: (888) 289 - 7299*

### AVAILABLE MODEL NUMBER VOLTAGE REFERENCE

T3 (208-230/3/60) --- T4 (460/3/60) --- T5 (575/3/60)

### PRODUCT INFORMATION

| MODELS AVAILABLE | COMPRESSOR |     |    | CONDENSER |            | RLA EA | LRA EA | MCA | MOP | RECIRC. TANK |
|------------------|------------|-----|----|-----------|------------|--------|--------|-----|-----|--------------|
|                  | MODEL      | QTY | HP | QTY       | CONNECTION |        |        |     |     |              |
| R407C R404A      |            |     |    |           |            | 15     | 99     | 20  | 30  | N/A          |
| PWC36S3-T3-ZD    | ZBD30KCE   | 1   | 4  | 1         | 1" F-NPT   | 7.4    | 47.5   | 10  | 15  |              |
| PWC36S3-T4-ZD    |            |     |    |           |            | 5.9    | 40     | 10  | 10  |              |
| PWC36S3-T5-ZD    |            |     |    |           |            |        |        |     |     | N/A          |
| PWC36S6-T3-ZD    | ZBD30KCE   | 1   | 4  | 1         | 1" F-NPT   | 15.7   | 115    | 20  | 35  |              |
| PWC36S6-T4-ZD    |            |     |    |           |            | 7.5    | 47.5   | 10  | 15  |              |
| PWC36S6-T5-ZD    |            |     |    |           |            | 6.4    | 40     | 10  | 10  |              |

**DRAKE REFRIGERATION INC**  
 2900 SAMUEL DRIVE  
 BENSALEM, PA 19020  
 (888) 289-7299  
[www.drakechillers.com](http://www.drakechillers.com)

\*ALL INFORMATION **FOR REFERENCE ONLY**