

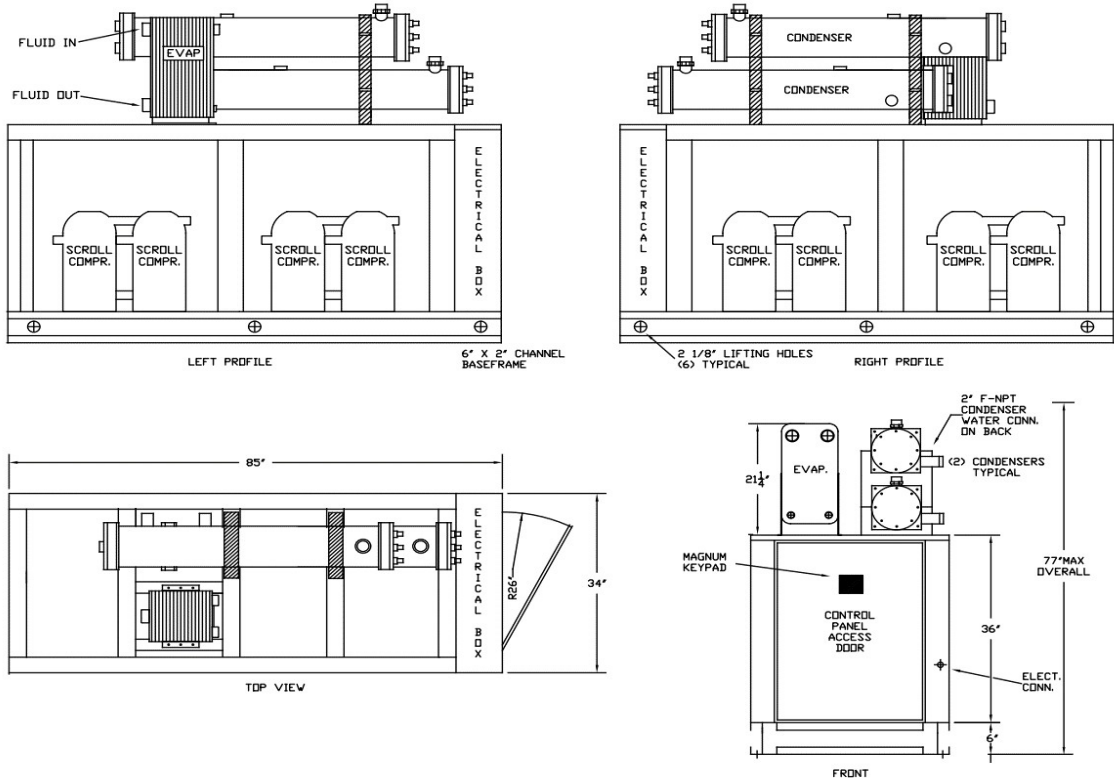


®

PWC280Q-Z

PACKAGED WATER-COOLED 28 HP TANDEM SCROLL

DIMENSIONAL DRAWINGS



LENGTH	WIDTH	HEIGHT	WEIGHT	FLUID CONNECTIONS
85"	34"	42" - 77" MAX	3300 LBS	2" F-NPT

PRODUCT PERFORMANCE INFORMATION

REFRIGERANT	COMPRESSOR OPER. SUCTION TEMP. RANGE	LFT °F	75 °F ECFT		80 °F ECFT		85 °F ECFT		90 °F ECFT		95 °F ECFT	
			TONS	KBTU/H	TONS	KBTU/H	TONS	KBTU/H	TONS	KBTU/H	TONS	KBTU/H
R407C	10°F to 55°F	20	15.1	182	14.7	176	14.2	170	13.7	164	13.2	158
		35	21.6	259	21.0	252	20.4	245	19.8	238	19.2	230
		45	26.9	322	26.2	314	25.5	306	24.7	297	24.0	288
		55	33.0	396	32.2	387	31.4	377	30.5	366	29.7	356
		60	36.5	438	35.6	428	34.7	417	33.8	406	32.8	394

DRAKE REFRIGERATION INC
 2900 SAMUEL DRIVE
 BENSLEM, PA 19020
 (888) 289-7299
www.drakechillers.com

*ECFT- Entering Condenser Fluid Temperature
 *ALL INFORMATION **FOR REFERENCE ONLY**



®

PWC280Q-Z

PACKAGED WATER-COOLED 28 HP TANDEM SCROLL

STANDARD FEATURES

FEATURE	BENEFIT
Listings	ETL 3046941, UL STD 1995, CAN/CSA STD, C22.2 No. 236
Micro Control Systems Controller	Open source, microprocessor built to operate in the HVAC/R industry
Controls	BMS, BAS communications, remote access, monitoring services
Stainless Steel Brazed Plate Evaporator	Corrosion resistant, fully insulated and selected upon requirements
Copeland Tandem Scroll Compressors	Industry leader, long lasting compressor
25%-100% Capacity Control	Allows for tight control on varying loads
Compressor Crankcase Heater	Prevents compressor damage caused by cold refrigerant on startup
Suction Accumulator	Protects the compressor from damage caused by liquid flood back by preventing liquid from entering the compressor
Water Flow Switch	Protects against process fluid freezing caused by pump failure
Hot Gas Bypass	Aids in the prevention of evaporator freeze ups and capacity control
Copper Tube Condenser Barrel	Corrosion resistant and cleanable, enhanced heat transfer
Compressor Vibration Eliminators	Eliminates vibration transfer and reduces noise
Painted Galvanized Steel Metal Cabinet	Sturdy, corrosion resistance, professional appearance
Insulated Process Fluid Lines	Maximum thermal efficiency
Factory Tested	Ensures the unit meets the customer's performance designed criteria and arrives in working order
Full Refrigerant Charge	Hassle free and more efficient installation
NEMA 3R Rated Electrical	Indoor/outdoor use
Phase Monitors	Electrical protection for compressors

AVAILABLE OPTIONS

OPTIONS	AVAILABLE
Extended Warranty	4 year extended compressor warranty
Electronic Expansion Valves	Added consistency, efficiency, and control
Electrical	Compressor fusing, disconnects, circuit breakers and more
Stainless Steel Pumps	1/3 HP to 25 HP on board pumps in multiple configurations & options
Fluid Piping Upgrades	Flow meters, pressure gauges, low flow bypass valves, and more
Chiller Evaporator Barrel	Enhanced corrosion resistance and cleanable, fully insulated, extra capacity
Marine Condenser	For corrosion resistance and saltwater applications
Head Pressure Control	Condenser water regulating valves
Other	Service outlets, city water add-ons, heaters, etc.

More options and customization available, contact factory for information: (888) 289 - 7299

AVAILABLE MODEL NUMBER VOLTAGE REFERENCE

T3 (208-230/3/60) --- T4 (460/3/60) --- T5 (575/3/60)

PRODUCT INFORMATION

MODELS AVAILABLE	COMPRESSOR			RLA EA	LRA EA	CONDENSER		MCA	MOP	RECIRC. TANK
	MODEL	QTY	HP			TYPE	CONNECTIONS			
R407C										
PWC280Q3-T3-Z	ZR84KCE	4	7 EA	28.6	196	BARREL	2" F-NPT	125	150	N/A
PWC280Q3-T4-Z				14.3	100			65	75	
PWC280Q3-T5-Z				9.6	90			45	50	

DRAKE REFRIGERATION INC
 2900 SAMUEL DRIVE
 BENSALEM, PA 19020
 (888) 289-7299
www.drakechillers.com

*ALL INFORMATION **FOR REFERENCE ONLY**