

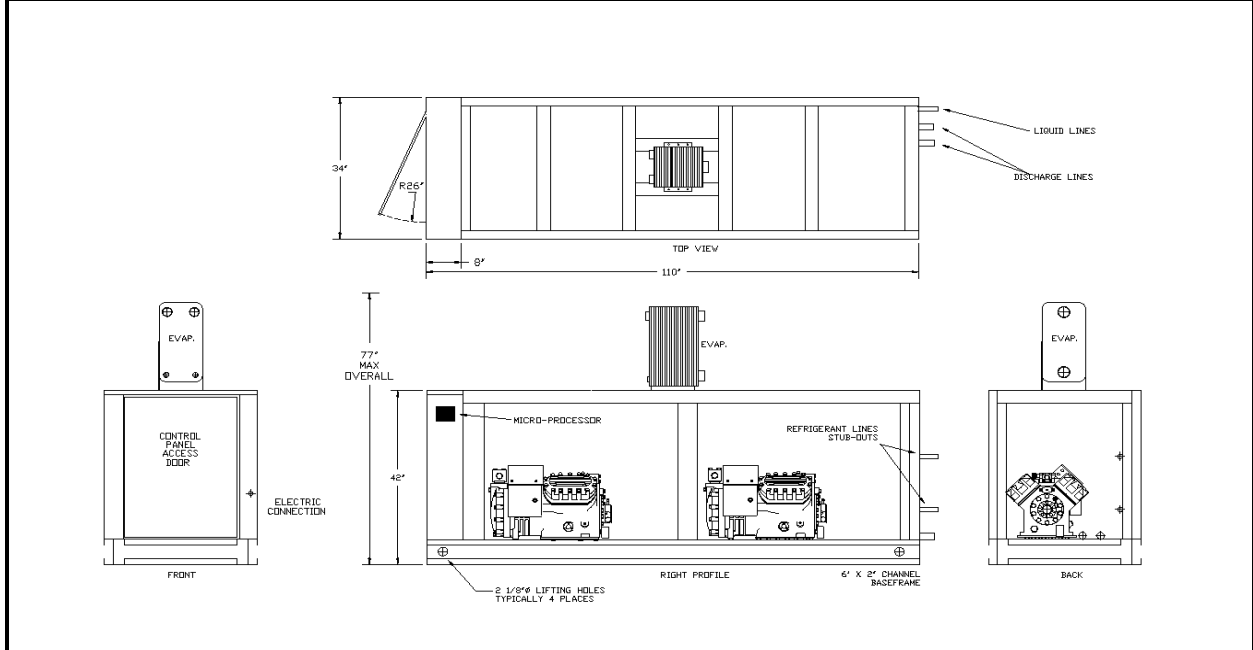


ES800D

SPLIT SYSTEM AIR-COOLED 80 HP DUAL CIRCUIT SEMI-HERMETIC

DIMENSIONAL DRAWINGS

EVAPORATOR SECTION - ES800D



| LENGTH | WIDTH | HEIGHT | WEIGHT | FLUID CONNECTIONS | R407C CONNECTIONS | | R404A CONNECTIONS | |
|--------|-------|---------|----------|-------------------|-------------------|--------|-------------------|--------|
| | | | | | DISCHG | LIQUID | DISCHG | LIQUID |
| 110" | 34" | 77" MAX | 2400 LBS | 4" V | 1 5/8" | 1 1/8" | 1 5/8" | 1 1/8" |

PRODUCT PERFORMANCE INFORMATION

| REFRIGERANT | COMPRESSOR OPER. TEMP. SUCTION RANGE | LFT °F | 80°F AMB | | 90°F AMB | | 95°F AMB | | 100°F AMB | | 105°F AMB | |
|-------------|--------------------------------------|--------|----------|------|----------|------|----------|------|-----------|------|-----------|-----|
| | | | TONS | EER | TONS | EER | TONS | EER | TONS | EER | TONS | EER |
| R407C | 10°F to 55°F | 20 | 37.7 | 7.6 | 34.4 | 6.7 | 32.9 | 6.3 | 31.3 | 5.9 | 29.5 | 5.5 |
| | | 35 | 53.6 | 9.4 | 49.4 | 8.3 | 47.5 | 7.8 | 45.4 | 7.3 | 43.3 | 6.8 |
| | | 45 | 66.4 | 10.7 | 61.8 | 9.5 | 59.3 | 8.9 | 56.9 | 8.3 | 54.3 | 7.8 |
| | | 55 | 80.9 | 12.0 | 75.4 | 10.6 | 72.4 | 9.9 | 69.5 | 9.3 | 66.8 | 8.7 |
| | | 65 | 96.3 | 13.2 | 89.6 | 11.6 | 86.6 | 10.9 | 83.1 | 10.2 | 79.7 | 9.6 |
| R404A | -10°F to 45°F | 0 | 32.1 | 6.9 | 29.4 | 6.2 | 28.0 | 5.8 | 26.5 | 5.4 | 25.2 | 5.1 |
| | | 10 | 38.1 | 7.3 | 34.5 | 6.4 | 33.0 | 6.0 | 31.3 | 5.6 | 29.4 | 5.2 |
| | | 25 | 51.7 | 8.4 | 47.2 | 7.4 | 44.8 | 6.9 | 42.7 | 6.4 | 40.5 | 6.0 |
| | | 40 | 68.9 | 9.7 | 63.2 | 8.5 | 60.4 | 8.0 | 57.5 | 7.4 | 54.9 | 7.0 |
| | | 55 | 90.2 | 11.0 | 82.8 | 9.7 | 79.4 | 9.1 | 76.0 | 8.5 | 72.6 | 7.9 |

DRAKE REFRIGERATION INC
 2900 SAMUEL DRIVE
 BENSLEM, PA 19020
 (888) 289-7299
www.drakechillers.com

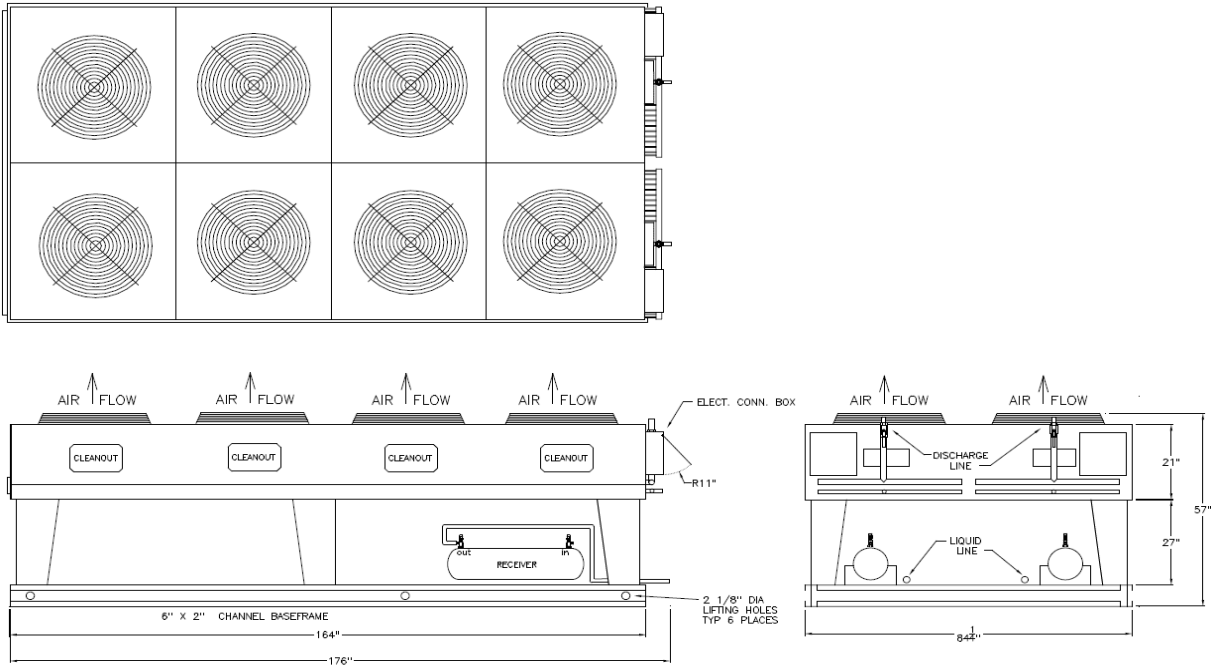
*ALL INFORMATION **FOR REFERENCE ONLY**



ES800D

SPLIT SYSTEM AIR-COOLED 80 HP DUAL CIRCUIT SEMI-HERMETIC

DIMENSIONAL DRAWINGS
CONDENSER SECTION - CS800D



| LENGTH | WIDTH | HEIGHT | WEIGHT |
|----------|--------|--------|----------|
| 176" MAX | 84.25" | 57" | 2500 LBS |

DRAKE REFRIGERATION INC
 2900 SAMUEL DRIVE
 BENSLEM, PA 19020
 (888) 289-7299
www.drakechillers.com

*ALL INFORMATION *FOR REFERENCE ONLY*



ES800D

SPLIT SYSTEM AIR-COOLED 80 HP DUAL CIRCUIT SEMI-HERMETIC

STANDARD FEATURES

| FEATURE | BENEFIT |
|---|---|
| Listings | ETL 3046941, UL STD 1995, CAN/CSA STD, C22.2 No. 236 |
| Micro Control Systems Controller | Open source, microprocessor built to operate in the HVAC/R industry |
| Controls | BMS, BAS communications, remote access, monitoring services |
| Stainless Steel Brazed Plate Evaporator | Corrosion resistant, fully insulated and selected upon requirements |
| Semi-Hermetic Compressor | Industry leader, rebuildable, long lasting compressor |
| Compressor Crankcase Heater | Prevents compressor damage caused by cold refrigerant on startup |
| Suction Accumulator | Protects the compressor from damage caused by liquid flood back by preventing liquid from entering the compressor |
| Water Flow Switch | Protects against process fluid freezing caused by pump failure |
| Hot Gas Bypass | Aids in the prevention of evaporator freeze ups and capacity control |
| Copper Tube/Aluminum Fin Condenser | Rust resistant and high CFM |
| Painted Galvanized Steel Metal Cabinet | Sturdy, corrosion resistance, professional appearance |
| Insulated Process Fluid Lines | Maximum thermal efficiency |
| Factory Tested | Ensures the unit meets the customer's performance designed criteria and arrives in working order |
| Full Refrigerant Charge | Hassle free and more efficient installation |
| NEMA 3R Rated Electrical | Indoor/outdoor use |
| Phase Monitors | Electrical protection for compressors |

AVAILABLE OPTIONS

| OPTIONS | AVAILABLE |
|---|--|
| Extended Warranty | 4 year extended compressor warranty |
| Electrical | Compressor fusing, disconnects, circuit breakers and more |
| Stainless Steel Pumps | 1/3 HP to 25 HP on board pumps in multiple configurations & options |
| Fluid Piping Upgrades | Flow meters, pressure gauges, low flow bypass valves, and more |
| Coastal Protection/Hazardous Environments | Heresite coating, "Gold" and Copper condenser coils |
| Low Ambient Protection | EC fan for temperature down to +10°F, Head pressure control for temperatures down to -20°F, Heated receivers for temperature down to -40°F |
| Other | Casters, service outlets, city water add-ons, heaters, etc. |

More options and customization available, contact factory for information: (888) 289 - 7299

AVAILABLE MODEL NUMBER VOLTAGE REFERENCE

T3 (208-230/3/60) --- T4 (460/3/60) --- T5 (575/3/60)

PRODUCT INFORMATION

| MODELS AVAILABLE | | COMPRESSOR | | | FAN MOTOR | | RLA EA | LRA EA | MCA | MOP | RECIRC. TANK |
|------------------|-------|------------|-----|-------|-----------|--------|--------|--------|-----|-----|--------------|
| R407C | R404A | MODEL | QTY | HP | QTY | FLA EA | | | | | |
| ES800D3-T3-S | | 6B5406PH | 2 | 40 EA | 8 | 2.3 | 157.1 | 700 | 400 | 500 | N/A |
| ES800D3-T4-S | | | | | | 1.2 | 78.6 | 350 | 175 | 250 | |
| ES800D3-T5-S | | | | | | 0.9 | 62.9 | 280 | 150 | 200 | |
| ES800D6-T3-S | | 6B5406PH | 2 | 40 EA | 8 | 2.3 | 157.1 | 700 | 375 | 525 | N/A |
| ES800D6-T4-S | | | | | | 1.2 | 78.6 | 350 | 190 | 265 | |
| ES800D6-T5-S | | | | | | 0.9 | 62.9 | 280 | 150 | 210 | |

DRAKE REFRIGERATION INC
 2900 SAMUEL DRIVE
 BENSALEM, PA 19020
 (888) 289-7299
www.drakechillers.com

*ALL INFORMATION **FOR REFERENCE ONLY**